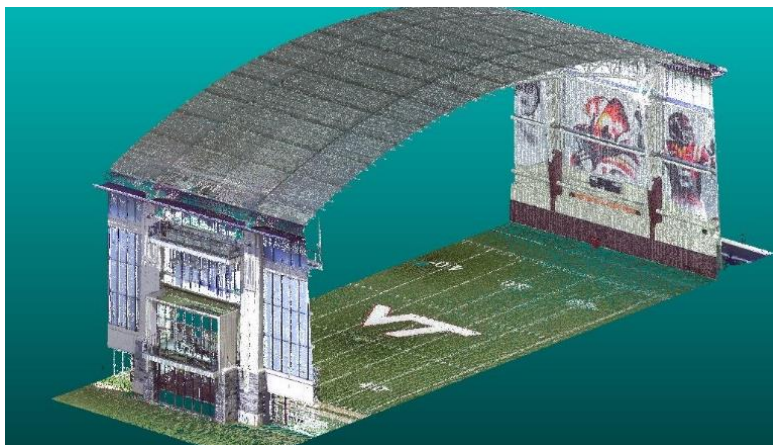




3D Laser Scanning Services

Like conventional survey procedures, the scanning survey data is located and recorded as X, Y, Z values. However, 3D laser scanning, unlike the "one-at-a-time" collection method of traditional surveying, collects millions of points per minute, creating a "point cloud". The point cloud is a true-scale 3D representation of what was scanned and can be exported into a variety of Cad or BIM based applications. With each 360° scan taking less than eight minutes, the benefits include a 3D "picture" of the area, replacing the need for traditional survey instruments, hand sketches and measurements, and the need to manually draft drawings based on the field data. The true as-built conditions provided can be utilized by architects, structural and civil engineers, surveyors, and GIS applications. 3D Laser Scanning data collection provides a level of accuracy, completeness, and efficiency that exceeds conventional techniques.



3D Laser Scanning data collection provides a level of accuracy, completeness, and efficiency that exceeds conventional techniques.

Contact us at daa@daa.com for more info.

